



Groveport Madison Schools Facility Input Meetings

November 2018



Elementary & Middle Schools

- 1990's – OFCC conducts facilities review – recommended replacement of several of the District's schools
 - Would cost in excess of \$78 million to renovate
 - If using state funds, must follow the 2/3 rule (our buildings average 86%)
- 2012 – OFCC reaffirms replacement of current buildings
 - Board chose to do a "Segmented Project"
 - High school now completed
 - Still qualify for 53% state matching funds for new construction
- Critical overcrowding at elementary and middle school levels
- Increasing maintenance and repair costs
- Pursuing a May 2019 bond issue to replace our remaining schools



Community Input and Process

- Committed to getting community input
- Series of community meetings this week
 - Gather feedback
 - Synthesize the feedback from all three meetings and other research underway
- Forming a Facilities Planning Team
 - Will present your input to the team
 - Team will present a formal plan to the Board in early January
 - We invite you to join the Facilities Planning Team

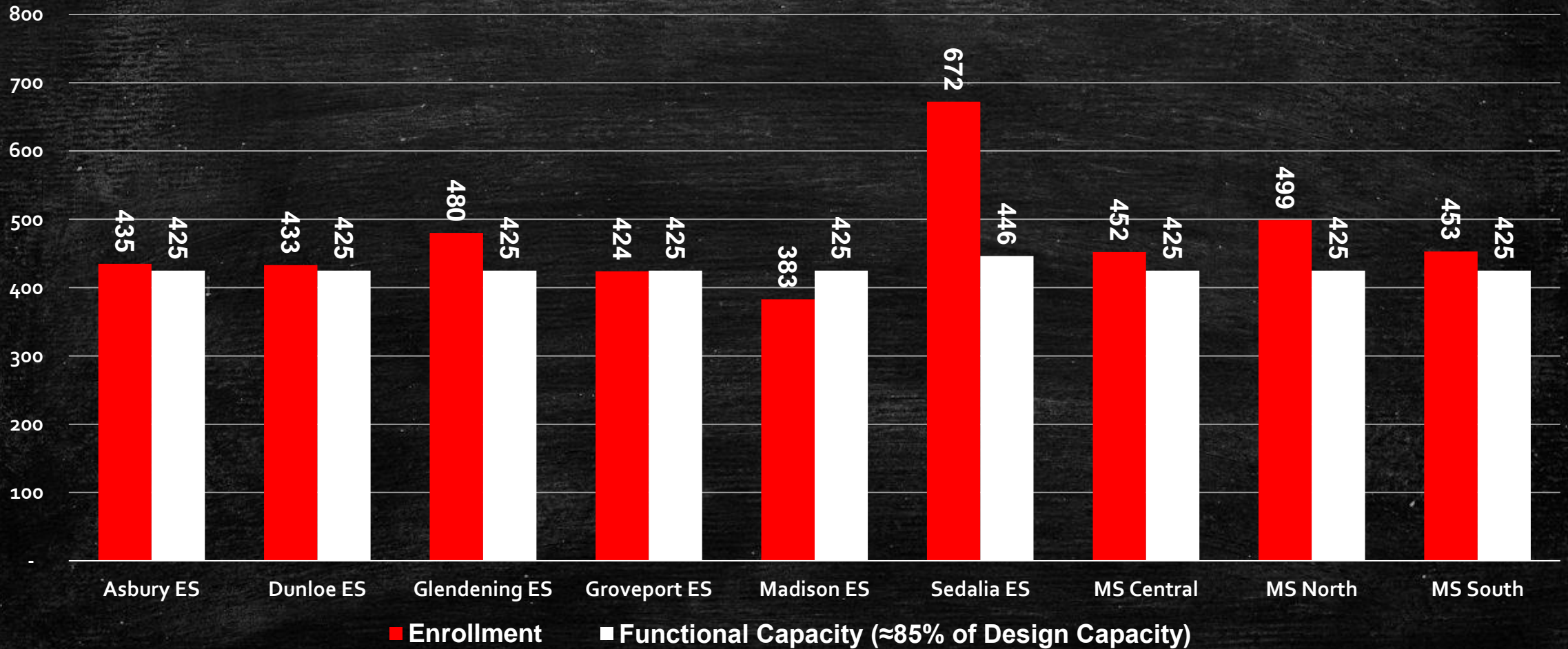


Current Elem./Middle School Conditions

- Severe overcrowding throughout the District
- Aging facilities needing millions in repairs and renovations
- Inability to provide access to programs
- Current buildings can't be retrofitted with up-to-date safety measures
- Some buildings designed as "Open Classroom Concept" facilities



Overcrowded Conditions





Modular Classrooms

Asbury ES	4	(Required \$75K in repairs in 2018)
Dunloe ES	4	
Groveport ES	2	
Sedalia ES	12	
TOTAL	<u>22</u>	

Three times more expensive per sq. ft. in utility costs than permanent bldgs.



Modular Classrooms





Facility Conditions





Facility Conditions





Facility Conditions





Facility Conditions



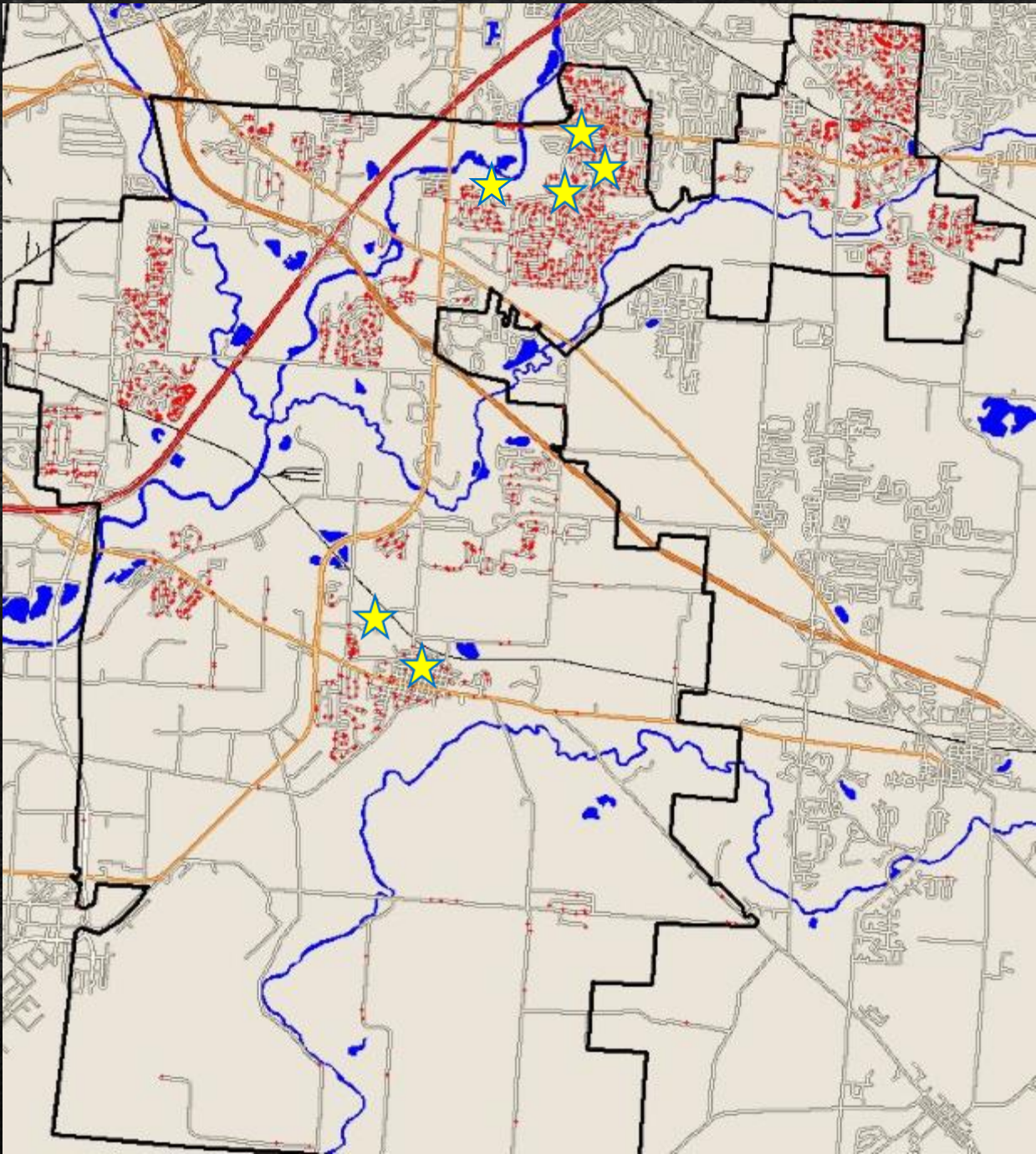


Access to Specific Programs

- Gifted Education Services
 - Sedalia Elementary School
 - Middle School North
- English as a Second Language
 - Glendening, Madison, and Sedalia Elementary Schools
 - Middle School South

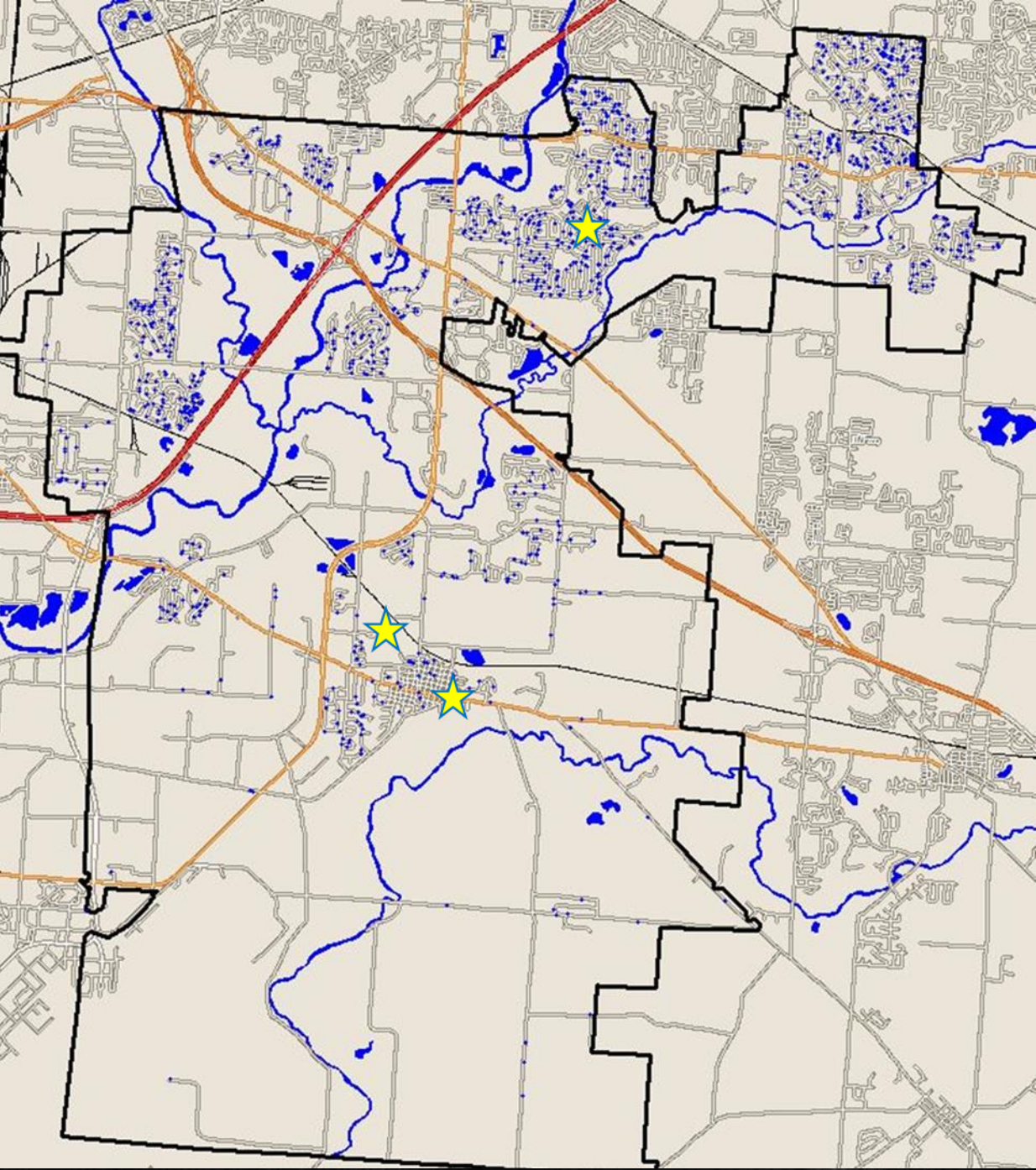


Distribution of Elementary School Students





Distribution of Middle School Students





School Boundaries & Transportation

- Due to the location of our schools compared to our population areas, some students are on buses as much as one hour twice per day





Elementary School Boundaries

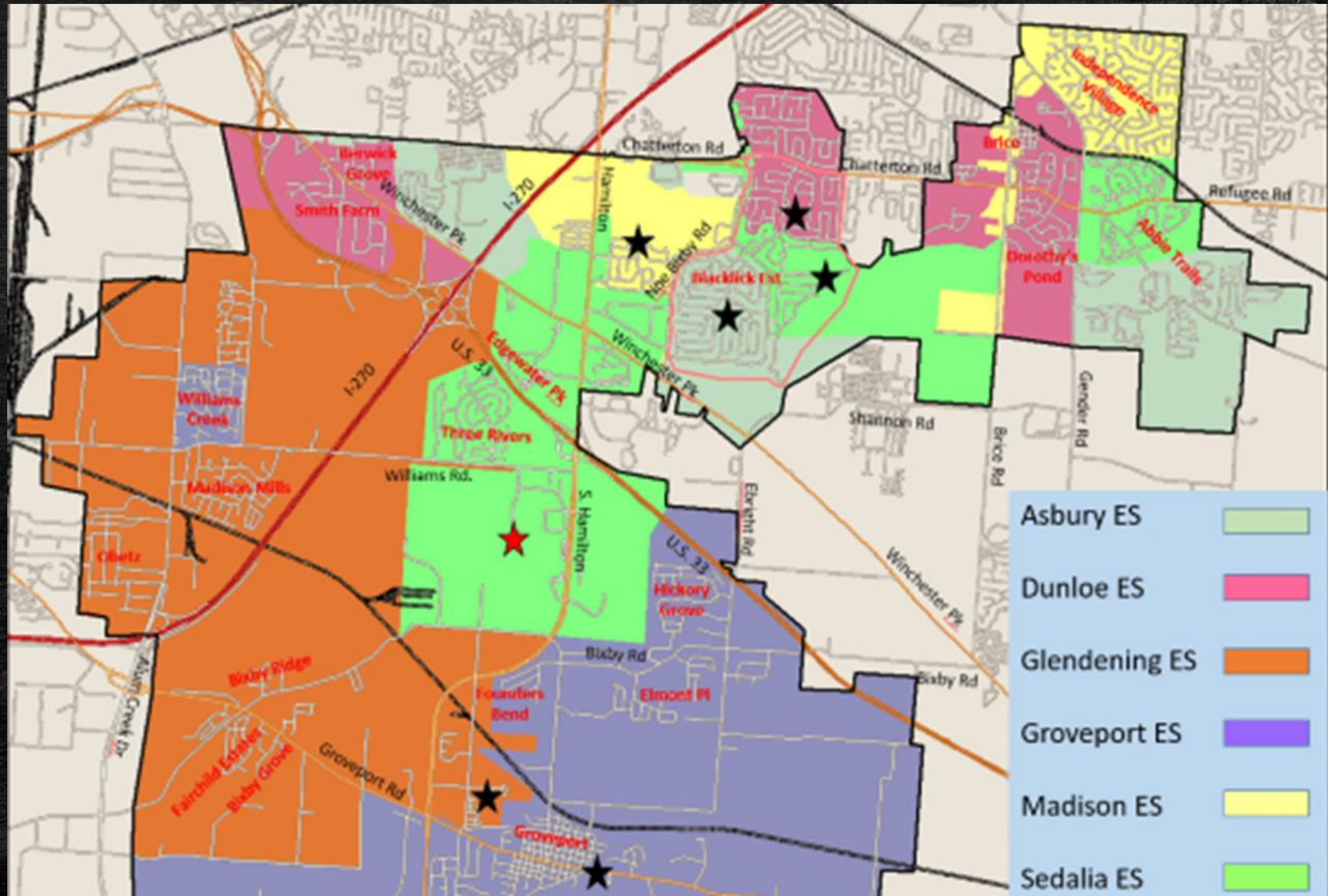




Table-top Group Discussion

"If you could address any facility-related concerns with respect to x school building, what would you change?"



Table-top Group Discussion

"When thinking about current buildings, what do you most value and/or what would you want to make sure we keep?"



Hanover Survey

The image shows the cover of a report titled "SCHOOL CLIMATE AND GRADE CONFIGURATION SURVEY". The cover has a teal background with white text. The title is in a large, bold, sans-serif font. Below the title, it says "Prepared for Groveport Madison Schools" and "January 2018". The background of the cover is a black and white photograph of a school building with a prominent arched entrance and a tall tree in the foreground.

SCHOOL CLIMATE AND GRADE CONFIGURATION SURVEY

Prepared for Groveport Madison Schools

January 2018



Survey Results

Kindergarten	Grade 1	Grade 2	Grade 3	Grade 4	Grade 5	Grade 6	Grade 7	Grade 8	High School (Grades 9-12)
K-2		3-4		5-6		7-8		High School	
K-5					Middle School (Grades 6-8)			High School	
K-8								High School	



Option #1 (K-2, 3-4, 5-6, 7-8)

Kindergarten	Grade 1	Grade 2	Grade 3	Grade 4	Grade 5	Grade 6	Grade 7	Grade 8	High School (Grades 9-12)
K-2			3-4		5-6		7-8		High School

- **Single building for each grade band (4 schools)**
 - Example: one, stand-alone K-2 building to serve all K-2 students; one, stand-alone 3-5 building to serve all 3-5 students
- **Estimate \$122 million to construct four, large schools**
 - Would require land purchases due to the size of the four buildings
- **Students remain with the same group throughout K-12**
 - Five school transitions
- **Limited flexibility for enrollment growth**



Option #2 (K-5, 6-8)

Kindergarten	Grade 1	Grade 2	Grade 3	Grade 4	Grade 5	Grade 6	Grade 7	Grade 8	High School (Grades 9-12)
K-5						Middle School (Grades 6-8)			High School

- **Current configuration**
 - Traditional format, familiar to most people
 - Three transitions
- **Four-building plan**
 - Either one K-5 and two middle schools, or three K-5 buildings and one middle school
 - Estimate \$122 million
- **May not have to purchase additional land**
- **Can't build on existing sites while current buildings are in use**
 - Several years to complete the projects due to no alternative space to house students during construction



Option #3 (K-8)

Kindergarten	Grade 1	Grade 2	Grade 3	Grade 4	Grade 5	Grade 6	Grade 7	Grade 8	High School (Grades 9-12)
K-8									High School

- Three-building plan housing K-8
 - Estimate \$117 million
- Could construct as campuses (similar to MS Central and Groveport ES)
 - Could share mechanical system and some common spaces
 - Saves space and reduces amount of land needing to be purchased
 - Very efficient and flexible
- Most existing sites are too small for the size of buildings that would be required
- Requires land purchase(s)
 - Potential to use some existing sites
- Only two transitions for students



Conceptual Campus-like Settings





Conceptual Multi-grade Campus





Prioritizing Your Preferences

"If we were to construct schools in a campus-like setting, how would you rank the importance of the following?"

- Location(s) of the schools
- Size of the schools (number of students)
- Efficiency of operation
- Cost of construction
- Travel time for students on buses
- Separation of grade levels
- Separate buses for older students and younger students
- Availability of identical programming (Gifted Services, ESL)
- Number of school transitions for students
- Ability to expand building for enrollment growth



Report Out

- Affirm need for new schools
- Identify concerns with existing buildings
- Identify what is most valued that we need to keep
- Options for new buildings



Next Steps

- Taking your feedback to the Facilities Planning Team
- We invite you to join us, if you would like to remain involved
 - You can provide your contact information on your volunteer card
 - If you would like to receive updates from us, just fill out your comment card with your contact information

Thank you!